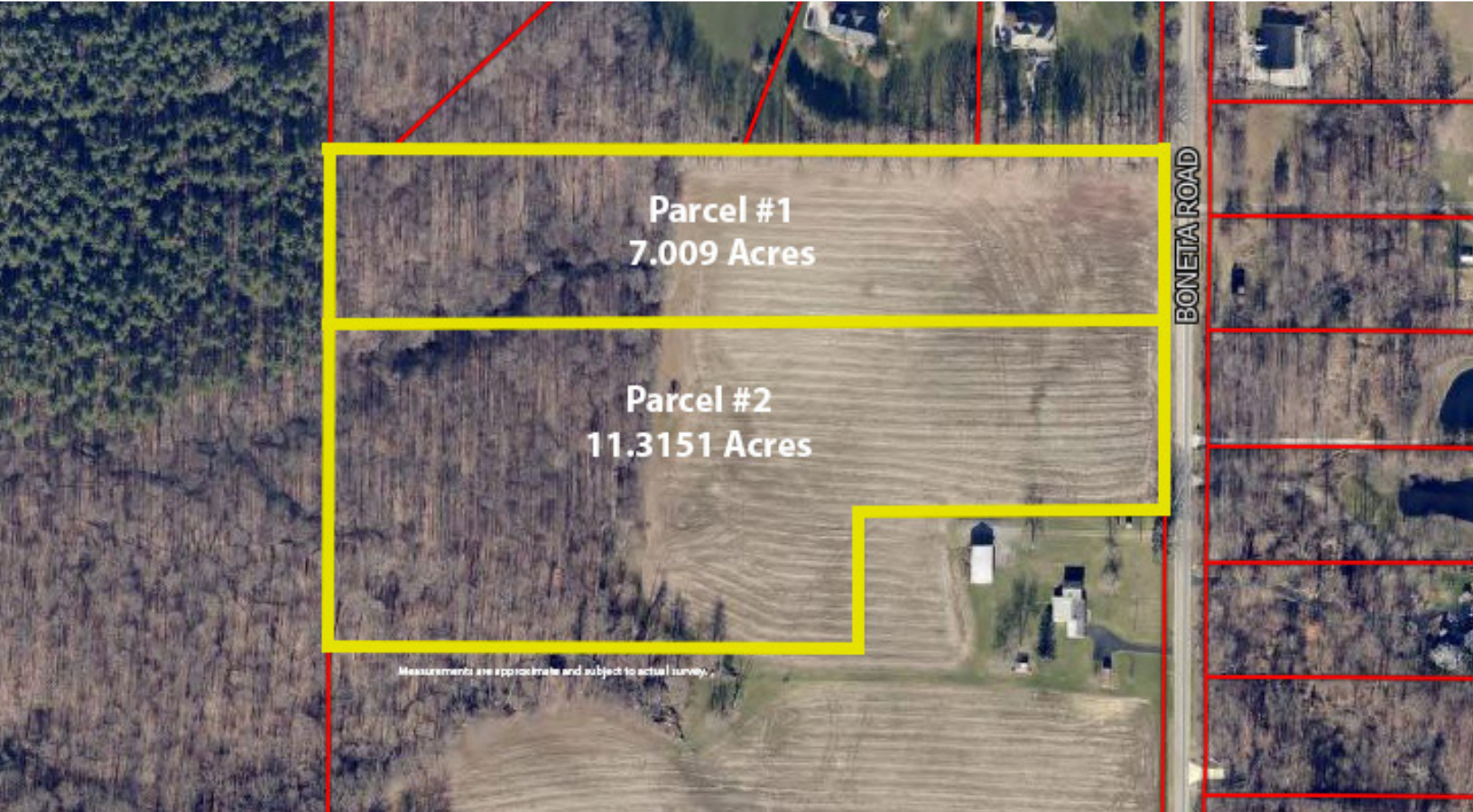


ABSOLUTE AUCTION

FRIDAY, OCTOBER 10, 2025, 12:00 PM
Live Auction W/ Online Bidding Available



LAND



18 ACRES VACANT LAND OFFERED IN TWO PARCELS & AS A WHOLE Half Wooded With Beautiful Building Sites

Medina County, Sharon Twp.,
Highland LSD

BONETA RD.,
MEDINA, OH 44256

Entirety: 18.3241 acres. Medina County parcel #033-12c-06-036. Beautiful building parcel with 525' frontage. Land is mostly tillable in the front and wooded in the back. Loads of wildlife and ideal building spots. All mineral rights owned by the sellers will transfer. Walk land with permission only. Fields are currently being farmed.

Parcel #1: 7.009 acres. Nice building tract with woods in the rear. 246.50' of frontage. Septic approved.

Parcel #2: 11.3151 acres. Nice building tract with woods in the rear. 278.50' of frontage. Septic approved.



Scan for auction
details, including
directions.

*Absolute Auction.
All sells to the
highest bidders
on location.*

www.kikoauctions.com | 800.533.5456

Information is believed to be
accurate but not guaranteed.
KIKO Auctioneers





Terms On Real Estate: 10% down auction day, balance due at closing. A 10% buyer's premium will be added to the highest bid to establish the purchase price. Any desired inspections must be made prior to bidding. All information contained herein was derived from sources believed to be correct. Information is believed to be accurate but not guaranteed. Property to be offered as a Multi Par auction and sold whichever way it brings the most.



JEFF R. KIKO
AUCTIONEER/REALTOR®
 330.206.1079
jeffkiko@kikocompany.com



REALTORS
 AUCTIONEERS
 ADVISORS

*Information is believed to be
 accurate but not guaranteed.*
 KIKO Auctioneers

